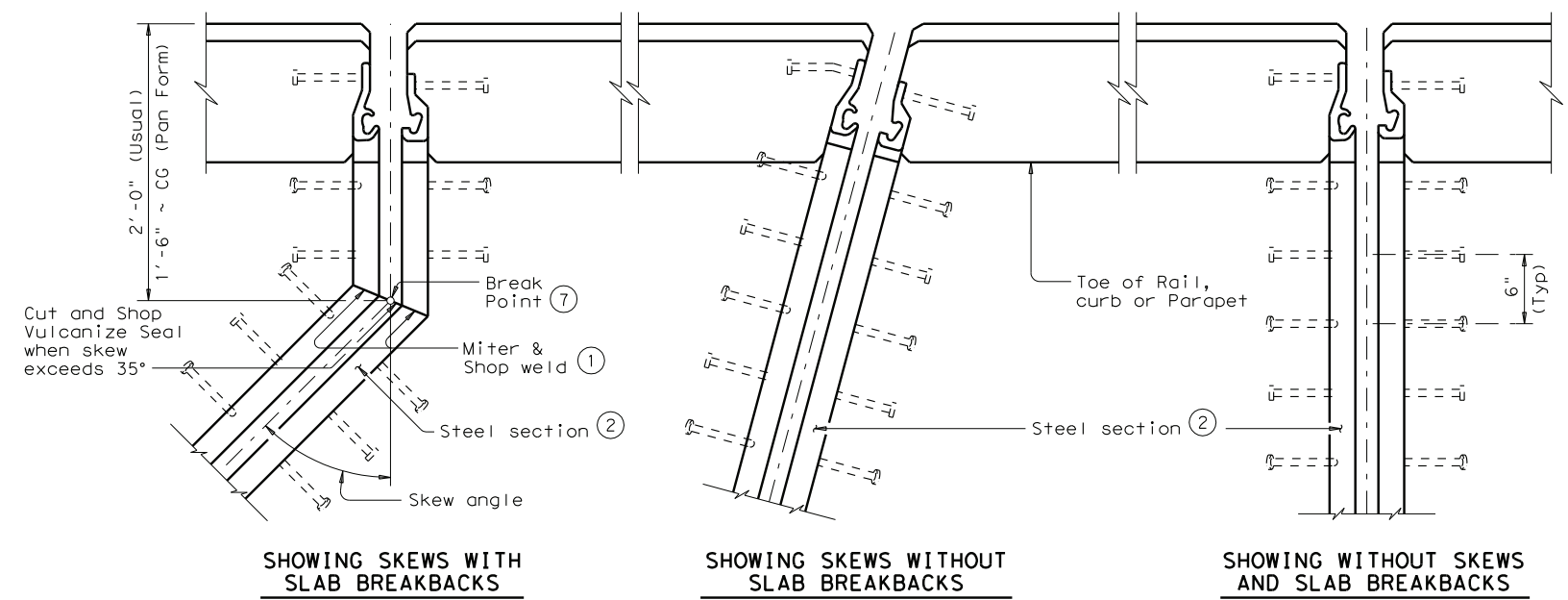
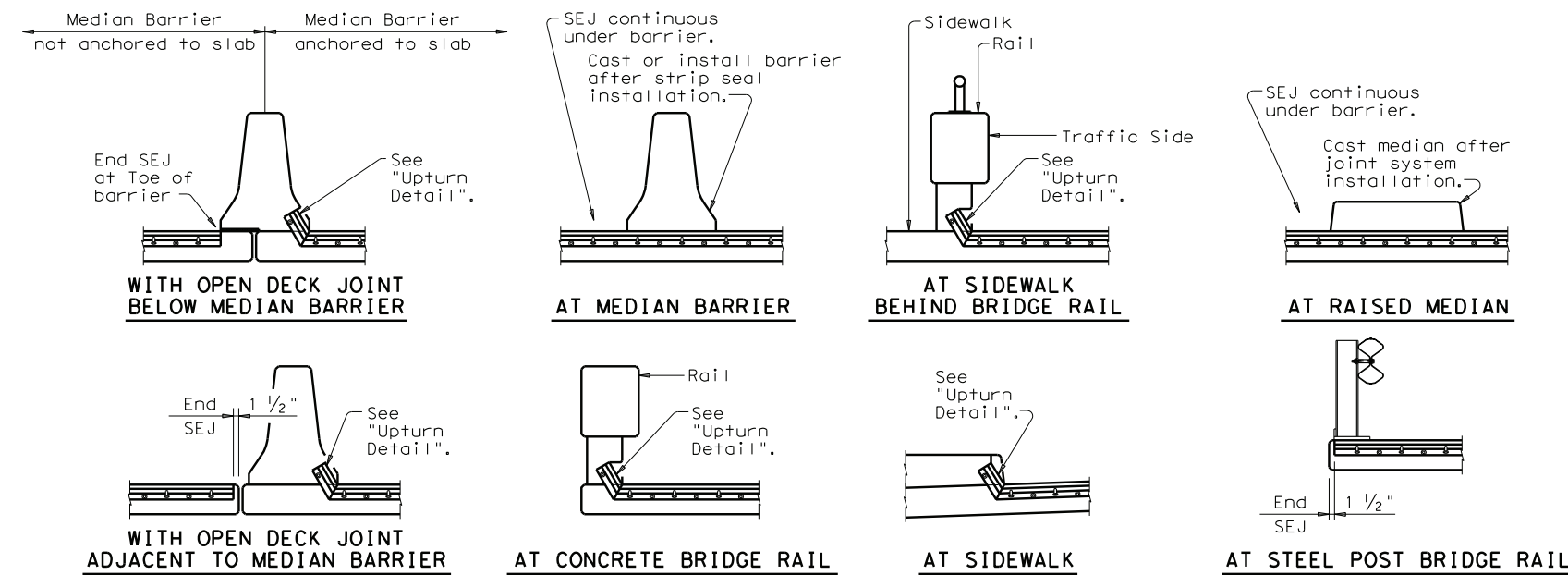


DISCLAIMER: The use of this standard is governed by the "Texas Engineering Practice Act". No warranty of any kind is made by TxDOT for any purpose whatsoever. TxDOT assumes no responsibility for the conversion of this standard to other formats or for incorrect results or damages resulting from its use.



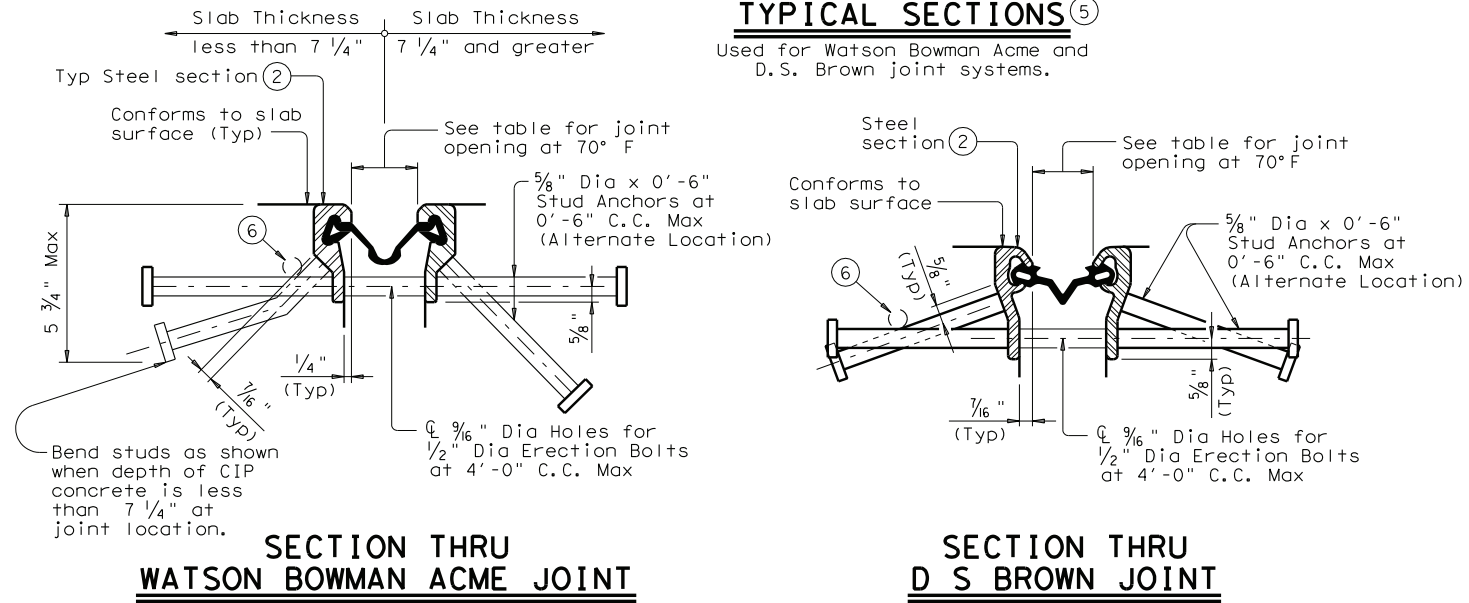
PLANS OF END CONDITIONS

Used for Watson Bowman Acme and D.S. Brown joint systems. Shown with Upturns



TYPICAL SECTIONS (5)

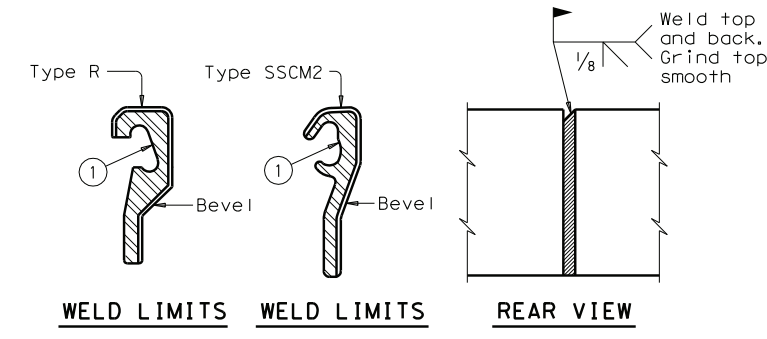
Used for Watson Bowman Acme and D.S. Brown joint systems.



SECTION THRU WATSON BOWMAN ACME JOINT

SECTION THRU D S BROWN JOINT

MANUFACTURER		STEEL SECTION		STRIP SEAL	
				4" JOINT	5" JOINT
Seal Type	Joint Opening (3)	Seal Type	Joint Opening (3)		
D.S. Brown	Type SSCM2	A2R-400	1 3/4"	A2R-XTRA	2"
Watson Bowman Acme	Type R	SE-400	1 3/4"	SE-500	2"
R. J. Watson	As Shown	SF-400	2 1/2"	N/A	N/A



FIELD SPLICE DETAIL

Used for Watson Bowman Acme and D.S. Brown joint systems.

FABRICATION NOTES:
 Corresponding sections of Sealed Exp Jts shall be temporarily shop assembled, checked for fit, and match marked for shipment. Erection holes shall be punched so as to line up when Sealed Exp Jts are in their final position. Weld studs in accordance with AWS D1.1. The seal shall be continuous and included in the price bid for Sealed Exp Jt. Steel sections shall be shipped in convenient lengths of 24'-0" Max and 10'-0" Min unless otherwise necessary for stage construction or widenings. One shop splice will be permitted in each shipping length provided no piece is less than 2'-0" in length and sufficient studs are added to limit the stud to shop or field splice distance to 2" Min and 4" Max. Shop and field splices shall be made by butt welding with areas in contact with seal to be ground smooth. Paint portions of steel sections not in contact with concrete with the primer specified for System II paint. Shop drawings for the fabrication of Sealed Expansion Joints will not require the Engineer's approval if fabrication is in accordance with the details shown on this standard. An SEJ Layout which identifies location of each steel section shall be developed. Permanently mark each steel section in accordance with the SEJ Layout.

CONSTRUCTION NOTES:
 The Contractor shall arrange for securing the Sealed Exp Jt in position, and placing to the proper grade and alignment by welding braces to adjacent reinf steel, to prestressed beam stirrups, or to anchors cast in concrete diaphragms. Cost of temporary bracing is to be included in the price bid for Sealed Exp Jt. Remove erection bolts and spacers when needed to prevent damage to the joint and slab concrete. Seal cavity shall be cleaned and prepared for seal installation as per the manufacturer's installation procedures.

GENERAL NOTES:
 Sealed Exp Jts shall be provided in the size and at locations shown on plans. Minimum slab and overhang thickness required for the use of SEJ-A is 6 1/2".

- Remove all burrs which will be in contact with seal prior to making splice.
- Shape of steel section shown is typical. Variations in sections must be approved by the Engineer.
- These openings are also the recommended minimum installation openings.
- Reduce for sidewalk or parapet heights less than 6".
- Other conditions affecting the joint profile should be noted elsewhere.
- Transverse bars in conflict with SEJ studs in either the bridge slab or approach slab shall be moved to rest at the junction of the studs.
- See Span details for location of break point.



SEALED EXPANSION JOINT TYPE A WITHOUT OVERLAY

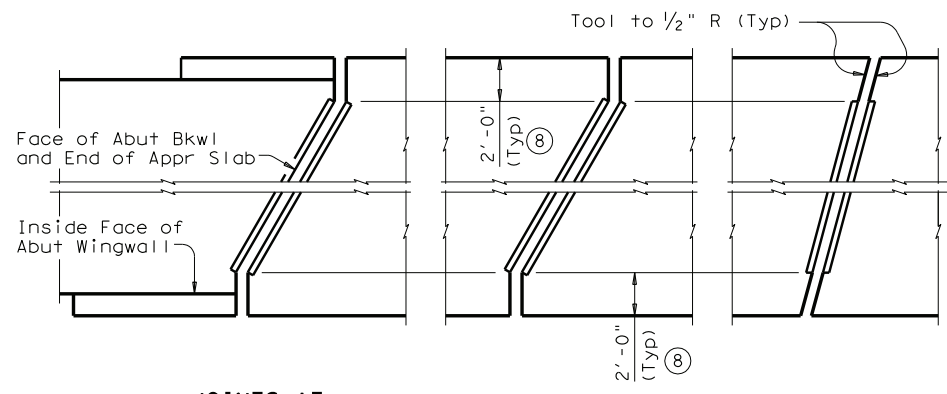
SEJ-A

FILE: sejaste1.dgn	DN: TxDOT	CK: TxDOT	DW: JTR	CK: JMH
© TxDOT April 2006	DISTRICT	FEDERAL AID PROJECT	SHEET	
REVISIONS				
12/10: Added R J Watson Joint.	COUNTY	CONTROL SECT	JOB	HIGHWAY

LEVELS DISPLAYED	1
PATH:	

DISCLAIMER: The use of this standard is governed by the "Texas Engineering Practice Act". No warranty of any kind is made by TxDOT for any purpose whatsoever. TxDOT assumes no responsibility for the conversion of this standard to other formats or for incorrect results or damages resulting from its use.

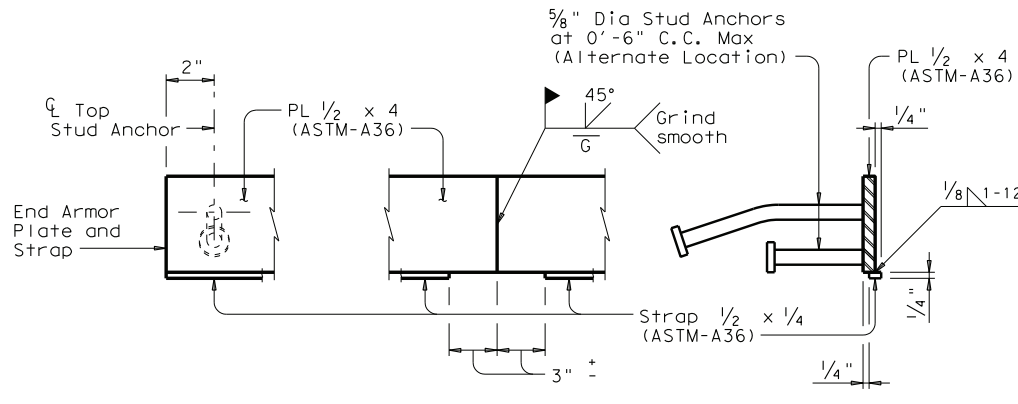
LEVELS DISPLAYED
PATH:



JOINTS AT ABUTMENTS **SKEWS OVER 15°** **SKEWS THRU 15°**

PLANS OF ARMOR PLATES

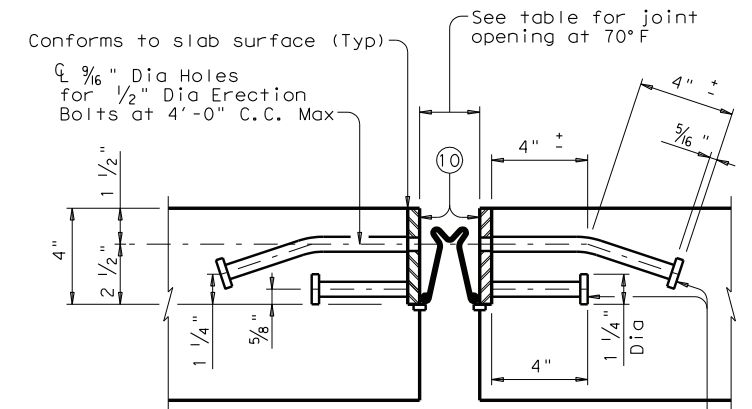
Used for R.J. Watson joint systems.



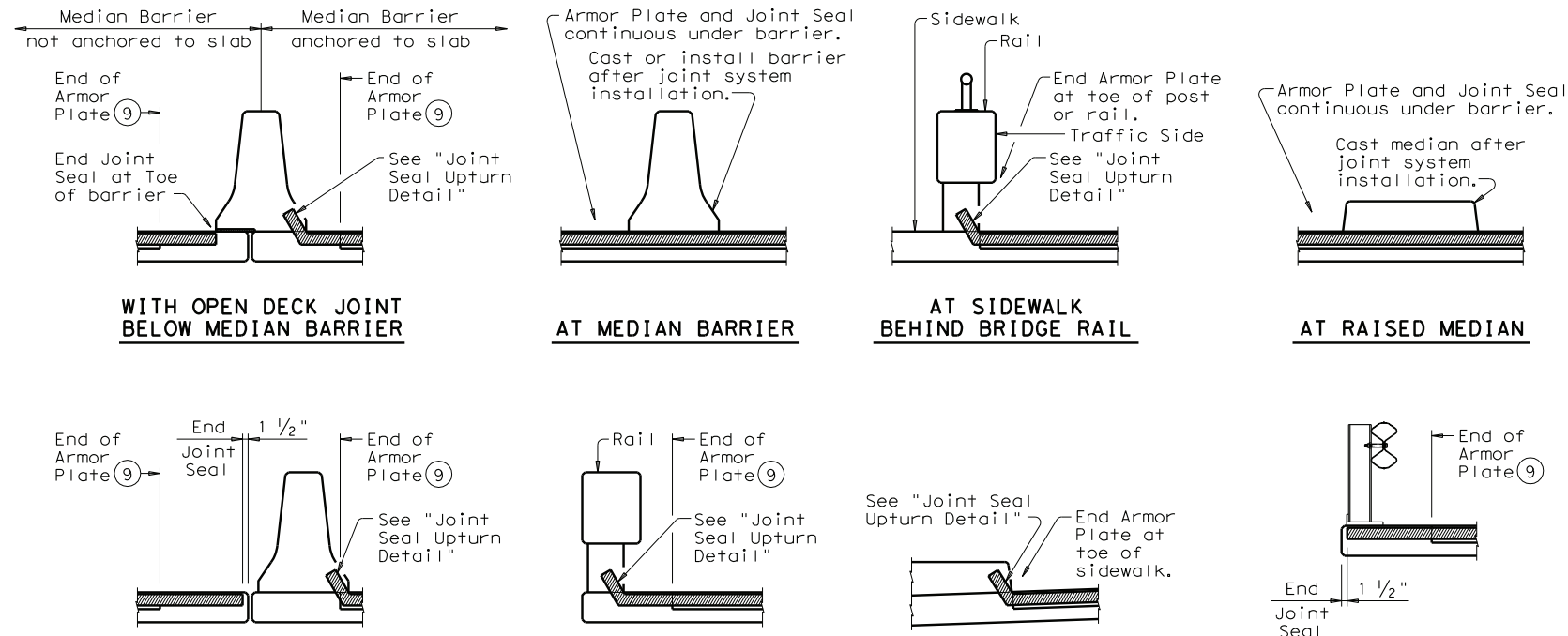
END VIEW **FIELD SPLICE** **SECTION**

ELEVATION OF ARMOR PLATE

Used for R.J. Watson joint systems.

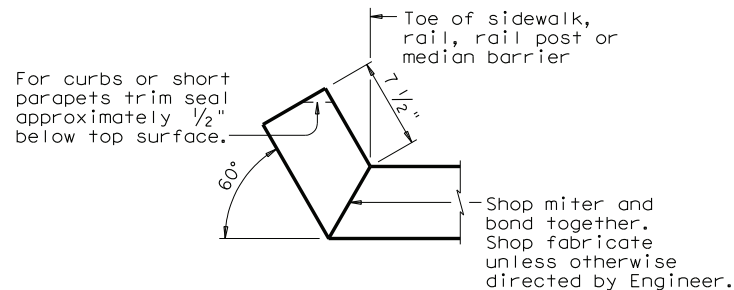


SECTION THRU R J WATSON JOINT



TYPICAL SECTIONS

Used for R.J. Watson joint systems.



JOINT SEAL UPTURN DETAIL

Used for R.J. Watson joint systems.

- 5 Other conditions affecting the joint profile should be noted elsewhere.
- 8 Unless shown otherwise, terminate armor plate at slab break point if break is more than 2' from slab edge.
- 9 See "Plans of Armor Plates".
- 10 Coat with manufacturer's supplied epoxy primer above strap before installing sealant.

CONSTRUCTION NOTE FOR R.J. WATSON JOINT:
Splice and install seal in accordance with the manufacturer's directions and with the adhesive provided by the manufacturer.

SHEET 2 OF 2

Texas Department of Transportation
Bridge Division

**SEALED EXPANSION JOINT
TYPE A
WITHOUT OVERLAY**

SEJ-A

FILE: sejuste1.dgn	DN: TxDOT	CK: TxDOT	DW: JTR	CK: JMH
© TxDOT April 2006	DISTRICT	FEDERAL AID PROJECT	SHEET	
REVISIONS	COUNTY	CONTROL SECT	JOB	HIGHWAY
12/10: Added R J Watson Joint.				