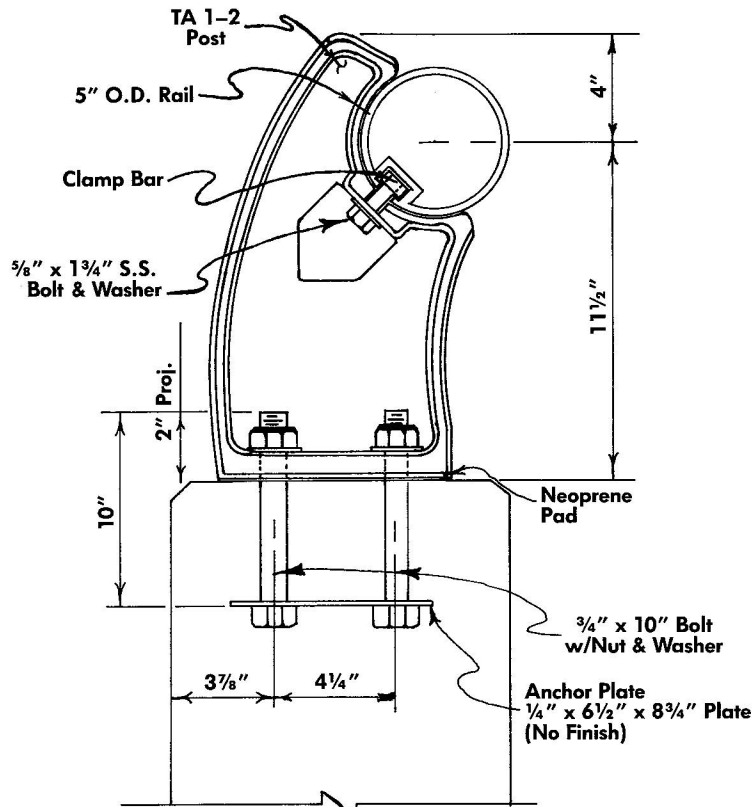
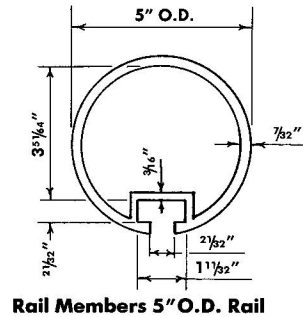


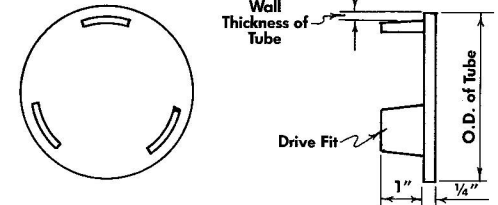
Typical Bridge Rail Detail



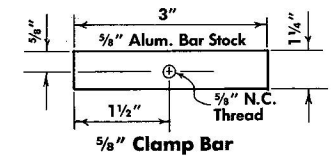
Typical Thru Section



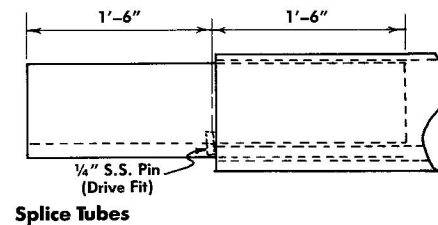
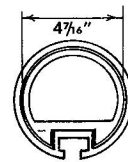
Rail Members 5" O.D. Rail



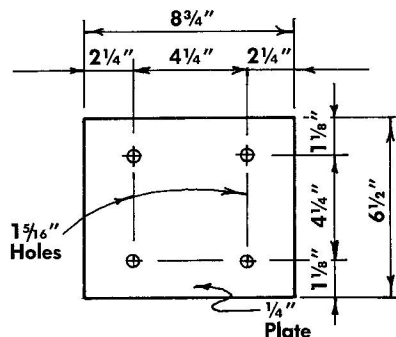
Aluminum End Cap Detail



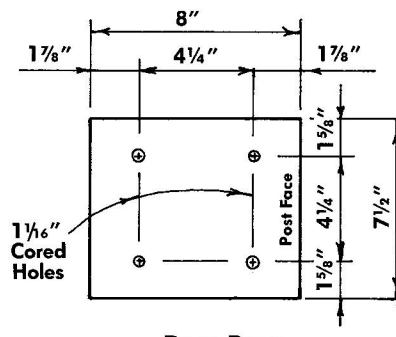
5/8" Clamp Bar



Splice Tubes



**Anchorage Plate
ASTM A36 Steel**



**Post Base
Neoprene Pad Similar
(1/16" Neoprene)**

**Aluminum Traffic Rail
TA1-2**

GENERAL NOTES:

- Posts Are Cast Aluminum Alloy A-444.
- Rails, Splice Members & Clamp Bars Are To Be Aluminum Alloy 6061-T6, Per ASTM B-221.
- Bolts, Nuts & Washers To Be ASTM A-325 And Hot Dip Galvanized.
- All Open Ends Of Rail Members Are To Be Capped With A Drive Fit Cast Alum. Cap.
- Cap Screws Used For Clamping Rail Are Stainless Steel.
- This Rail Conforms To City Of Houston Std. For 5005 Rail.

**Gordon's Specialties Inc.
Dallas, Texas**