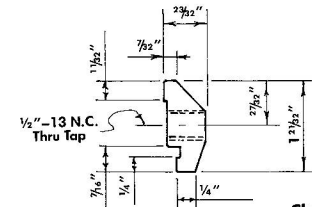
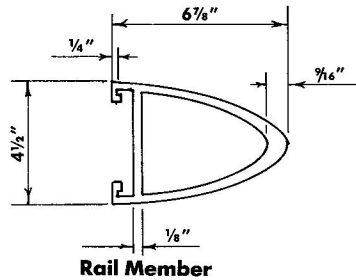
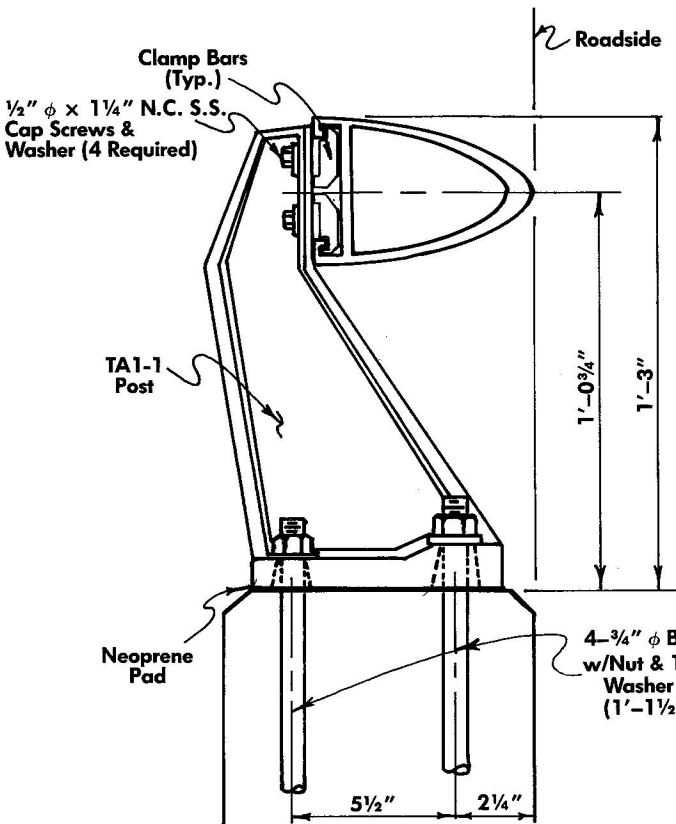
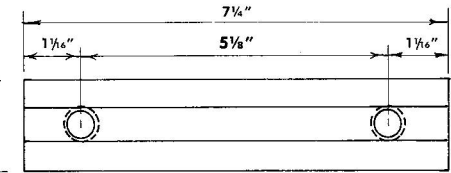


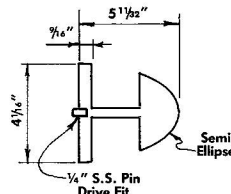
Typical Rail Detail



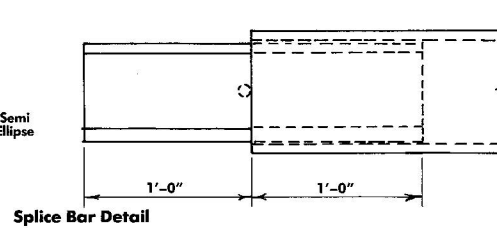
Clamp Bar Detail



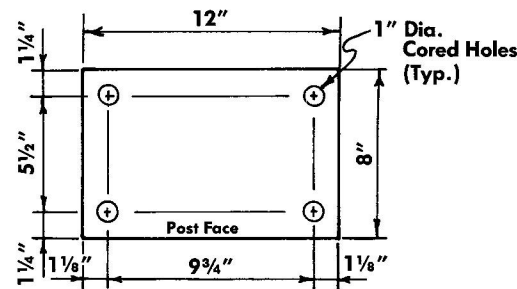
Typical Thru Section



Rail Member



Splice Bar Detail



Post Base
Neoprene Pad Similar
(1/16" Neoprene)

**Aluminum Traffic Rail
TA1-1**

GENERAL NOTES:

- Posts Shall Be Cast Aluminum Alloy A-444-T4.
- Materials For Rails, & Splice & Clamp Bars Shall Be Aluminum Alloy 6061-T6.
- Machine Screws For Rail Attachments Shall Be Stainless Steel.
- Anchor Bolts Shall Be ASTM A-325, Hot Dip Galvanized.
- This Rail Is Designed According To AASHTO 1977 Std. And Texas State Std. For T-4 Rail.

Gordon's Specialties Inc.
Dallas, Texas