

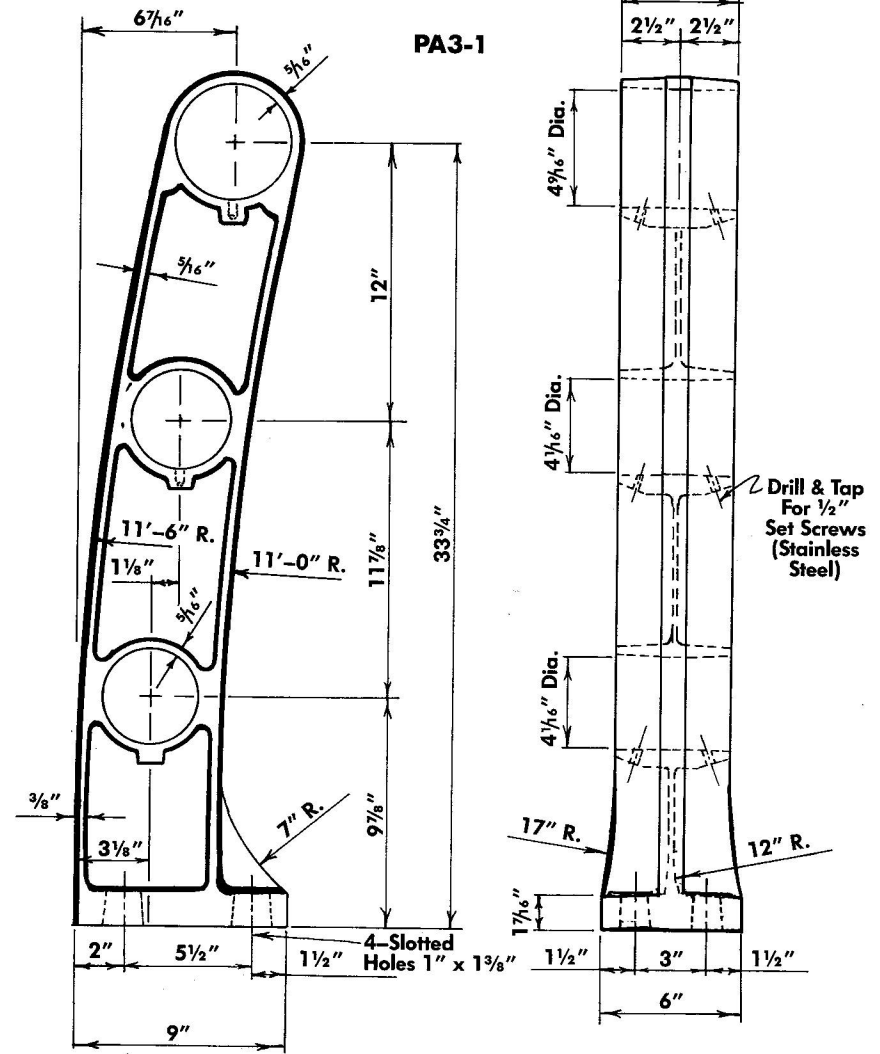
Side View

Front View

PA2-1

ELEMENT	DESCRIPTION
POST	CAST ALUMINUM ALLOY A356
TOP RAIL	4" OD x 3/16 WALL (6061-T6)
BOTTOM RAIL	3" OD x 3/16 WALL (6061-T6)
ANCHOR BOLTS	PER ENGINEER SPEC.

THIS POST CONFORMS TO TEXAS STATE STANDARD FOR TYPE "P" RAIL.



Side View

Front View

PA3-1

ELEMENT	DESCRIPTION
POST	CAST ALUMINUM ALLOY A356
TOP RAIL	4 1/2" OD x 1/8 WALL (6061-T6)
MID & BOTTOM RAIL	4" OD x 3/16 WALL (6061-T6)
ANCHOR BOLTS	PER ENGINEER SPEC.

Aluminum Pedestrian Rail
PA2-1 & PA3-1

Gordon's Specialties Inc.
Dallas, Texas