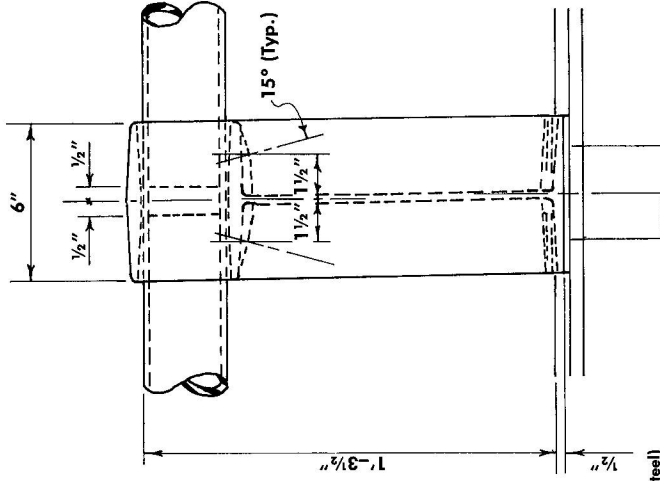
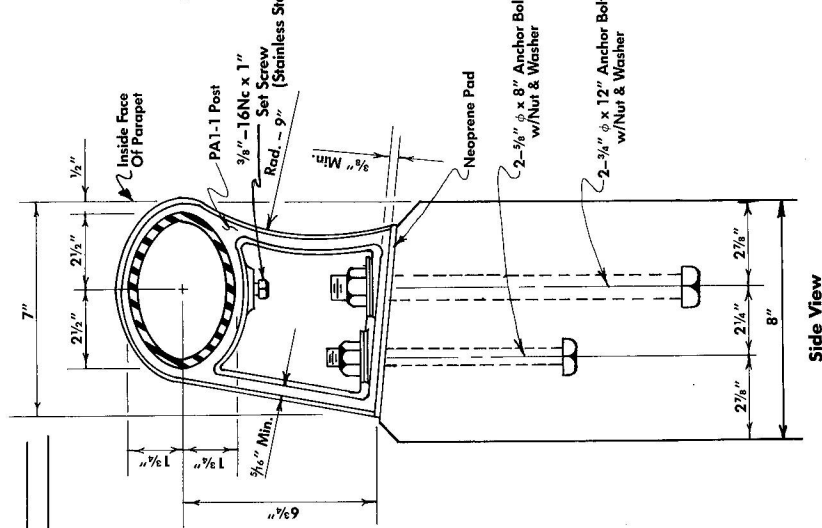


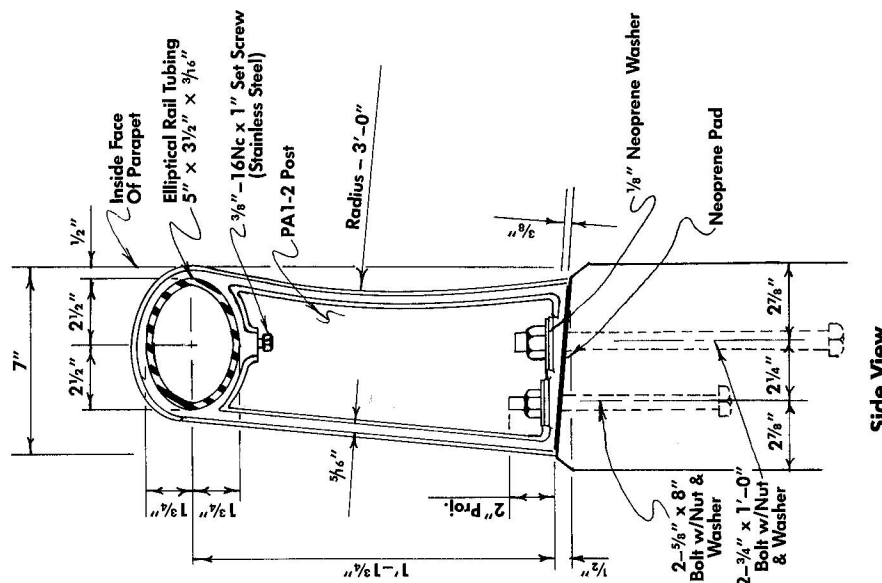
PA1-1



PA1-2



PA1-1



PA1-2

ELEMENT	DESCRIPTION
POST	CAST ALUMINUM ALLOY A356
RAIL	ELLIPTICAL TUBE 5 x 3 1/2 x 3/16" 6061-T6
ANCHOR BOLTS	PER ENGINEER SPEC.

CONFORMS TO TEXAS STATE STANDARD FOR TYPE "D" RAIL.

ELEMENT	DESCRIPTION
POST	CAST ALUMINUM ALLOY A356
RAIL	ELLIPTICAL TUBE 5 x 3 1/2 x 3/16" 6061-T6
ANCHOR BOLTS	PER ENGINEER SPEC.

CONFORMS TO TEXAS STATE STANDARD FOR TYPE "E" RAIL.

Aluminum Pedestrian Rail
PA1-1 & PA1-2

Gordon's Specialties Inc.
Dallas, Texas