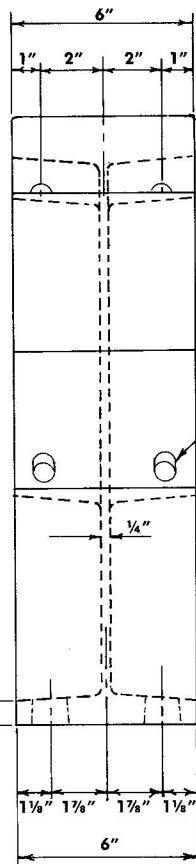
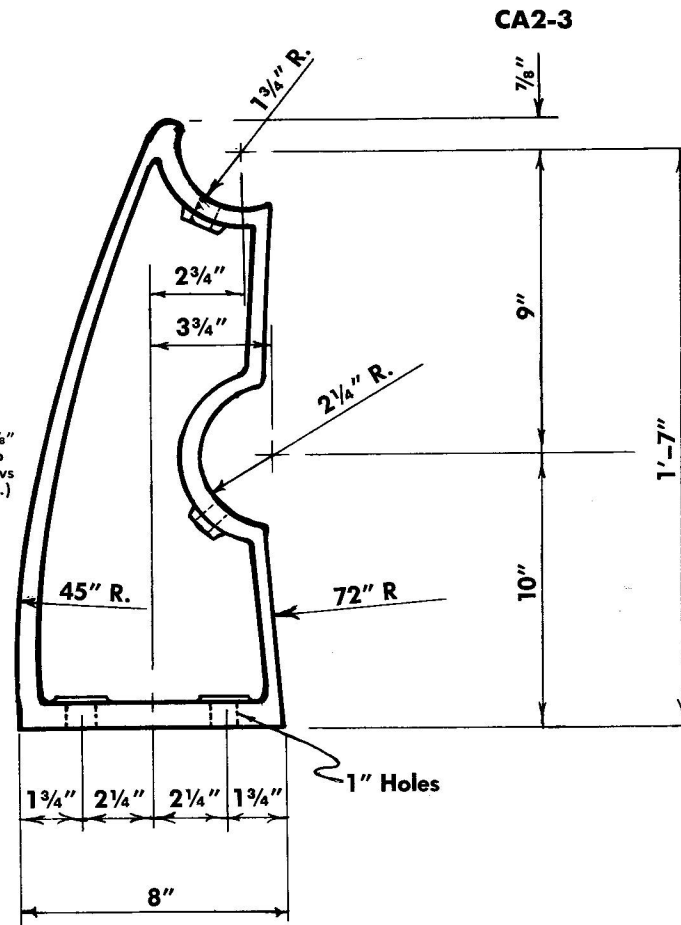


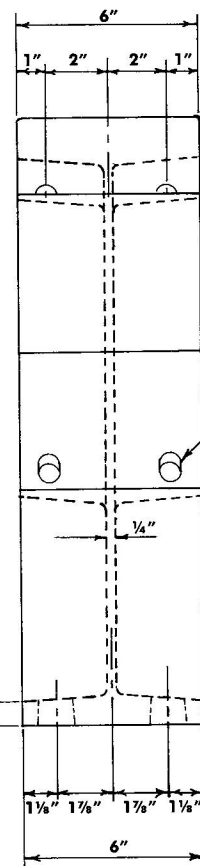
Side View



Front View



Side View



Front View

CA2-2

ELEMENT	DESCRIPTION
POST	CAST ALUMINUM ALLOY A356
TOP RAIL	3 1/2" OD TUBE 6061-T6
BOTTOM RAIL	4 1/2" OD TUBE 6061-T6
ANCHOR BOLTS	PER ENGINEER SPEC.

CONFORMS TO ARKANSAS STATE STANDARD.

CA2-3

ELEMENT	DESCRIPTION
POST	CAST ALUMINUM ALLOY A356
TOP RAIL	3 1/2" TUBE 6061-T6
BOTTOM RAIL	4 1/2" TUBE 6061-T6
ANCHOR BOLTS	PER ENGINEER SPEC.

CONFORMS TO OKLAHOMA STATE STANDARD FOR PTR2 RAIL.

**Combination Aluminum Rail
CA2-2 & CA2-3**

**Gordon's Specialties Inc.
Dallas, Texas**