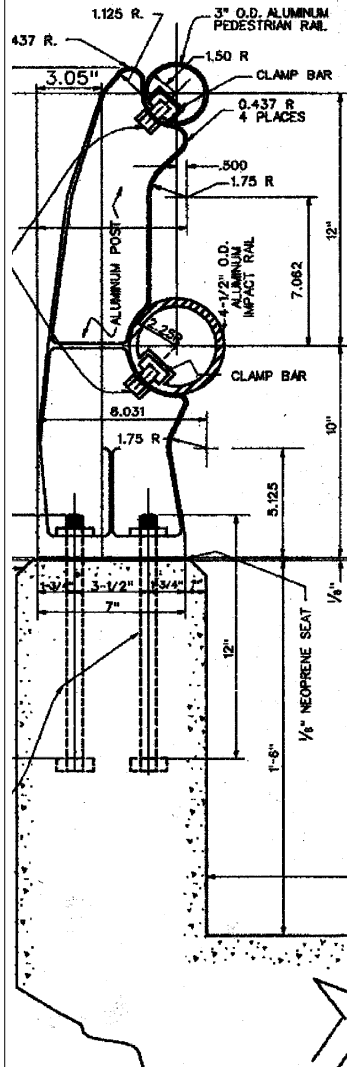
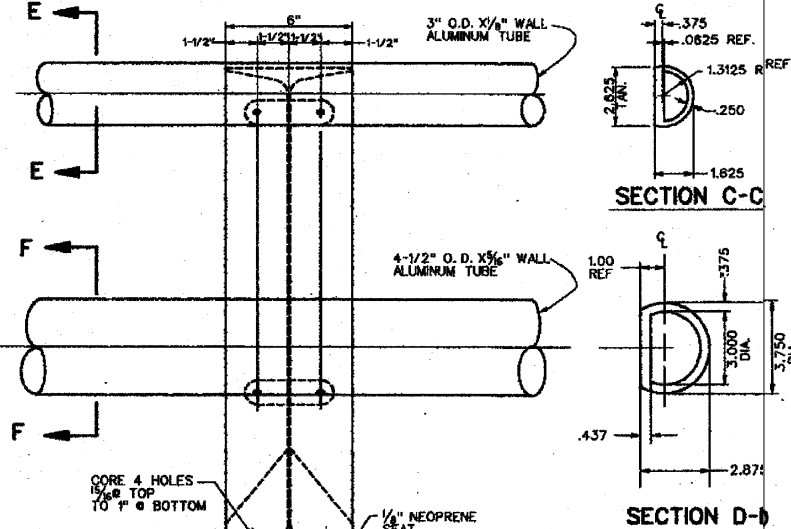


SECTION A-A - TYPICAL BRIDGE RAILING

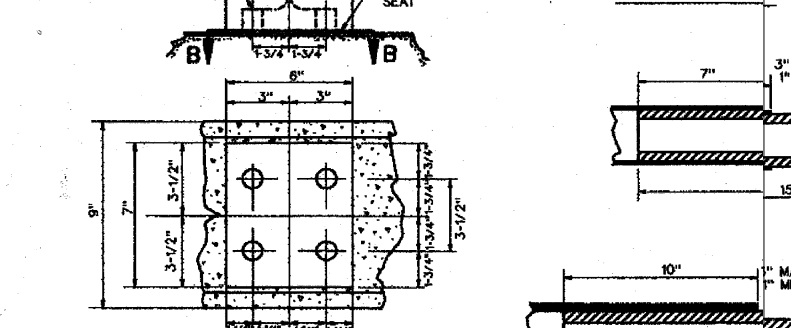
SCALE: 1/2" = 1'-0"



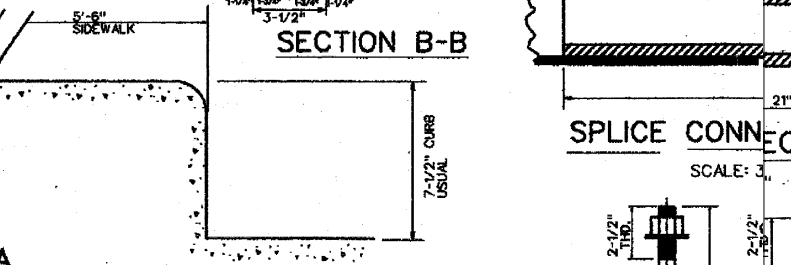
SECTION A-A
SCALE: 3" = 1'-0"



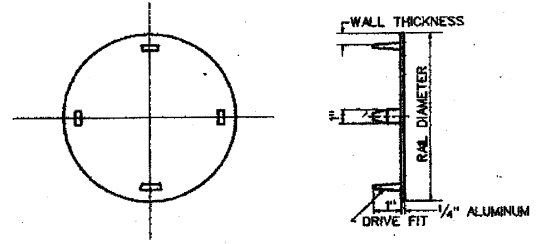
SECTION C-C



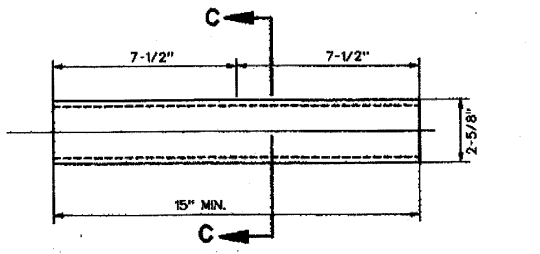
SECTION D-D



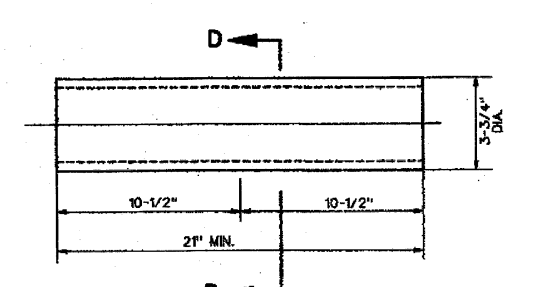
SECTION B-B



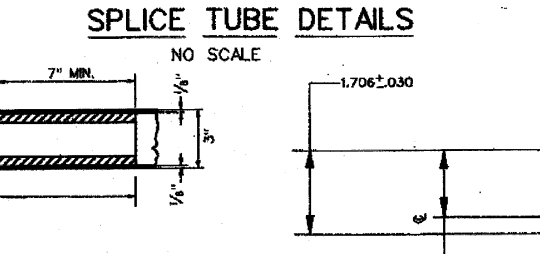
END CAP DETAIL
NO SCALE



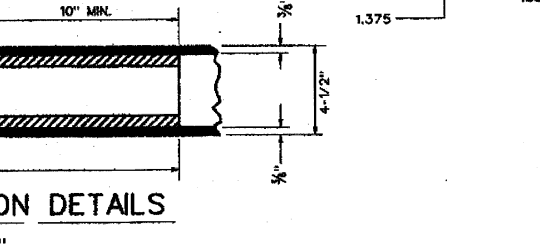
SECTION C-C



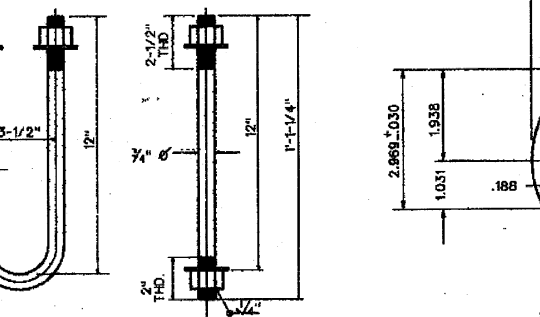
SECTION D-D



SECTION E-E



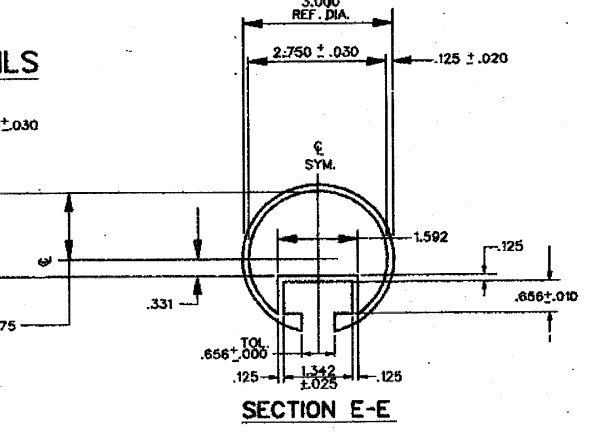
SECTION F-F



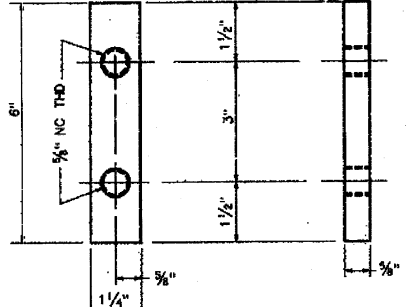
OR BOLT DETAILS
SCALE: 3" = 1'-0"

GENERAL CONSTRUCTION NOTES:

1. RAIL POSTS SHALL BE CAST ALUMINUM ALLOY, A356-T6, PERMANENT MOLD, MAXIMUM ALLOWABLE P.O.T. STAIN SHALL BE 8'-4" C-C.
2. ALL SQUARE EDGES OF POST CASTINGS SHALL BE GROUNDED, SANDING, BUFFED OR CAST TO A 1/8" RADIUS, AND ALL GATES, RISERS AND SEAMS SHALL BE GROUNDED, SANDING AND BUFFED TO A SMOOTH, FLUSH FINISH.
3. ALL POSTS SHALL BE INSTALLED NORMAL TO THE FINISHED GRADE AND SHALL BE SEATED ON A 1/8" THICK, 70 DUROMETER NEOPRENE RUBBER PAD.
4. CLAMP BAR BOLTS & WASHERS SHALL BE STAINLESS STEEL, 304 OR 316 AS PER ASTM A-302 OR A-304 TAMPER RESISTANT BOLTS CONFORMING TO GORDON'S SPECIALTIES INC. "S.S.T.R." BOLTS, OR EQUAL.
5. RAILS AND SPLICE TUBES SHALL BE EXTRUDED ALUMINUM PIPE ALLOY, 6061-T6 AS PER ASTM B-221-71 AND SHALL BE FURNISHED IN THE MILL FINISH.
6. ALL OPEN ENDS OF RAIL MEMBERS SHALL BE CAPPED-SEE END CAP DETAIL.
7. POST, RAILS, & FASTENERS SHALL CONFORM TO GORDON'S SPECIALTIES INC. ALUMINUM COMBINATION RAIL CA 2-T OR EQUAL. (SEE NOTE 4.)
8. SECTIONS OF RAIL TUBING SHALL BE ATTACHED TO A MINIMUM OF THREE POSTS WHEREVER PRACTICAL.
9. A RAIL SPLICE IS REQUIRED AT EACH BRIDGE EXPANSION JOINT. THE GAP AT RAIL SPLICES SHALL BE A MINIMUM OF ONE INCH OR EQUAL TO BRIDGE EXPANSION JOINT GAP PLUS 1/2 INCH, WITH THREE (3") MAXIMUM OPENING.
10. POST ANCHOR BOLTS SHALL BE GALVANIZED STEEL, 3/4" DIA. WITH 3/4" HEAVY HEX HEADNUT & 3/4" WASHER AS PER ASTM A-325. BOLTS, NUTS AND WASHERS GALVANIZED AS PER ASTM A-153.
11. RAIL MEMBERS SHALL BE INSTALLED PARALLEL TO THE FINISHED PARAPET WALL GRADE & SHALL BE FABRICATED TO FOLLOW THE CURVATURE OF THE ROADWAY. THIS DESIGN DOES NOT LEND ITSELF TO RADIOUS. SUBSTITUTION OF STANDARD ROUND TUBES WITH TOGGLE BOLT MOUNTING OR CHORDING OF RAILS & PARAPET WALLS IS REQUIRED ON BRIDGES WITH LESS THAN 250' RADIUS.
12. AFTER TIGHTENING ANCHOR BOLTS WILL BE "SHOT" WITH A STEEL PIN, PROVIDING COMPLETE PENETRATION OF THE NUT AND IMPROVEMENT INTO THE ANCHOR BOLT. PIN IS TO CONFORM TO HILTI PIN NO. ENK 16 S 12 OR EQUAL. RECOMMENDED GUN IS HILTI DX 450.



SECTION E-E



CLAMP BAR DETAIL

APPROVED: *[Signature]*
DIRECTOR OF PUBLIC WORKS & TRANSPORTATION
DATE: *[Date]*

STANDARD DETAIL FOR					
ALUMINUM BRIDGE					
RAILING DETAILS					
DEPARTMENT OF PUBLIC WORKS & TRANSPORTATION					
CITY OF DALLAS, TEXAS					
DESIGN	DRAWN	DATE	FILE NO.	PAGE NO.	
C.O.D.	A.B.M.A.	APRIL 1997	25D	1	9001